



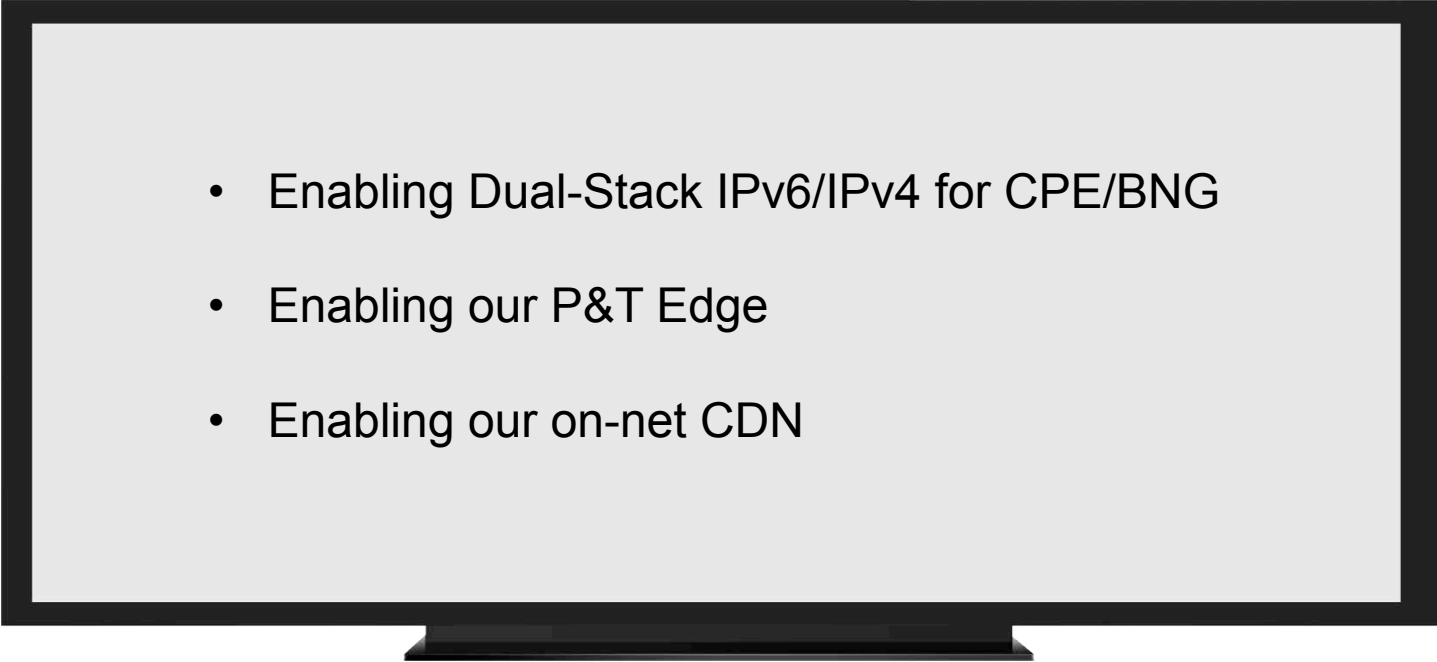
sky

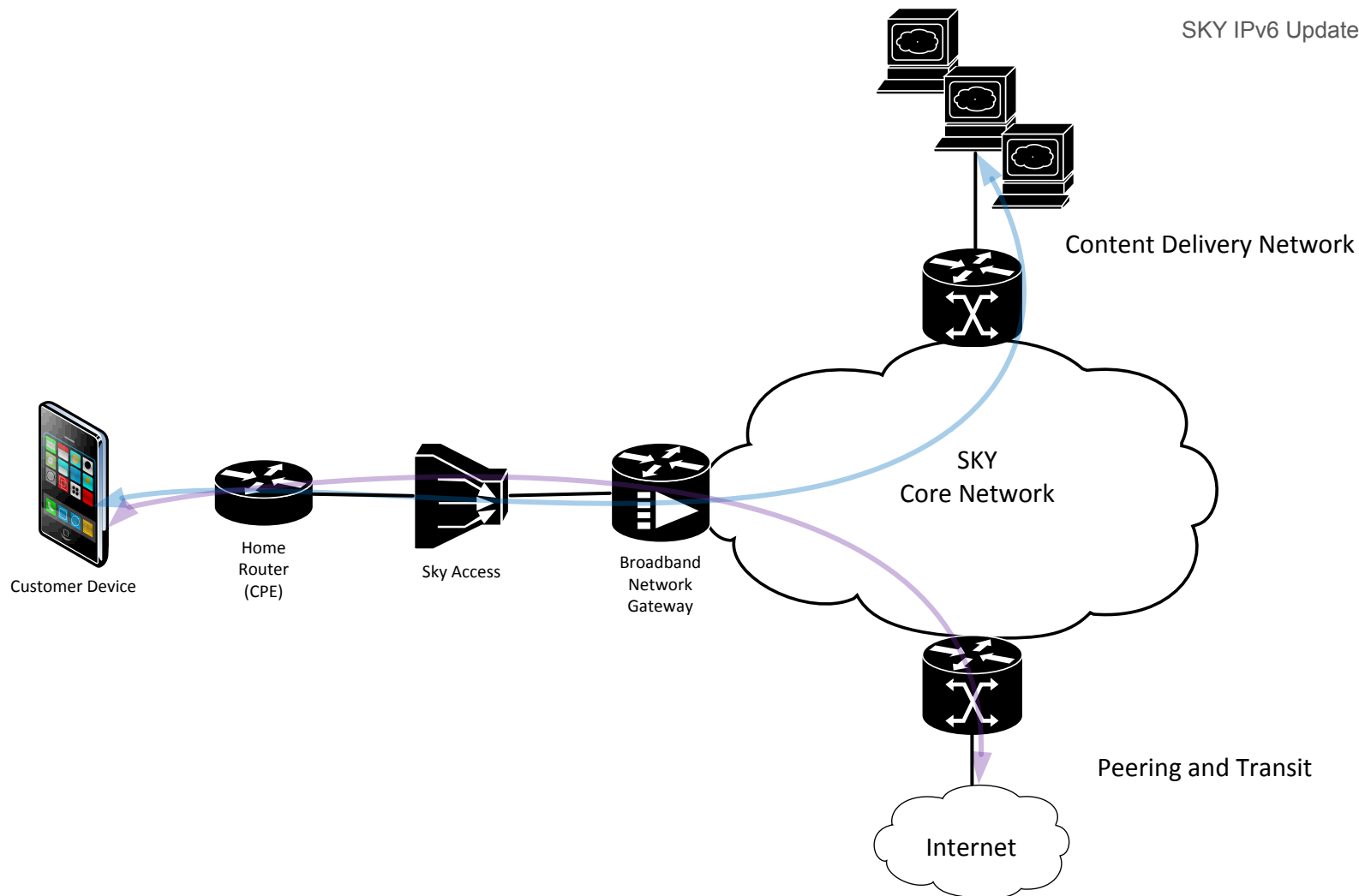
IPv6 Update
Nick Chettle – BSKYB

Oz the Great and Powerful

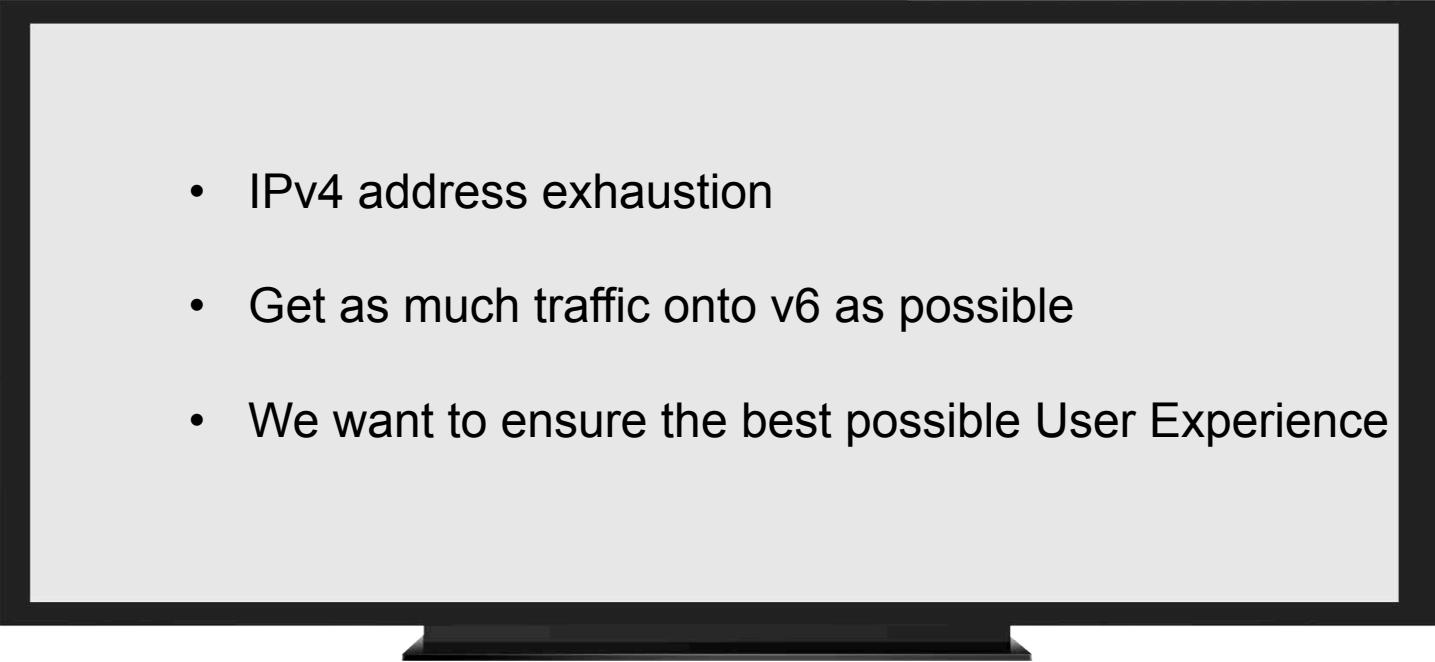
sky MOVIES HD

What are we doing?

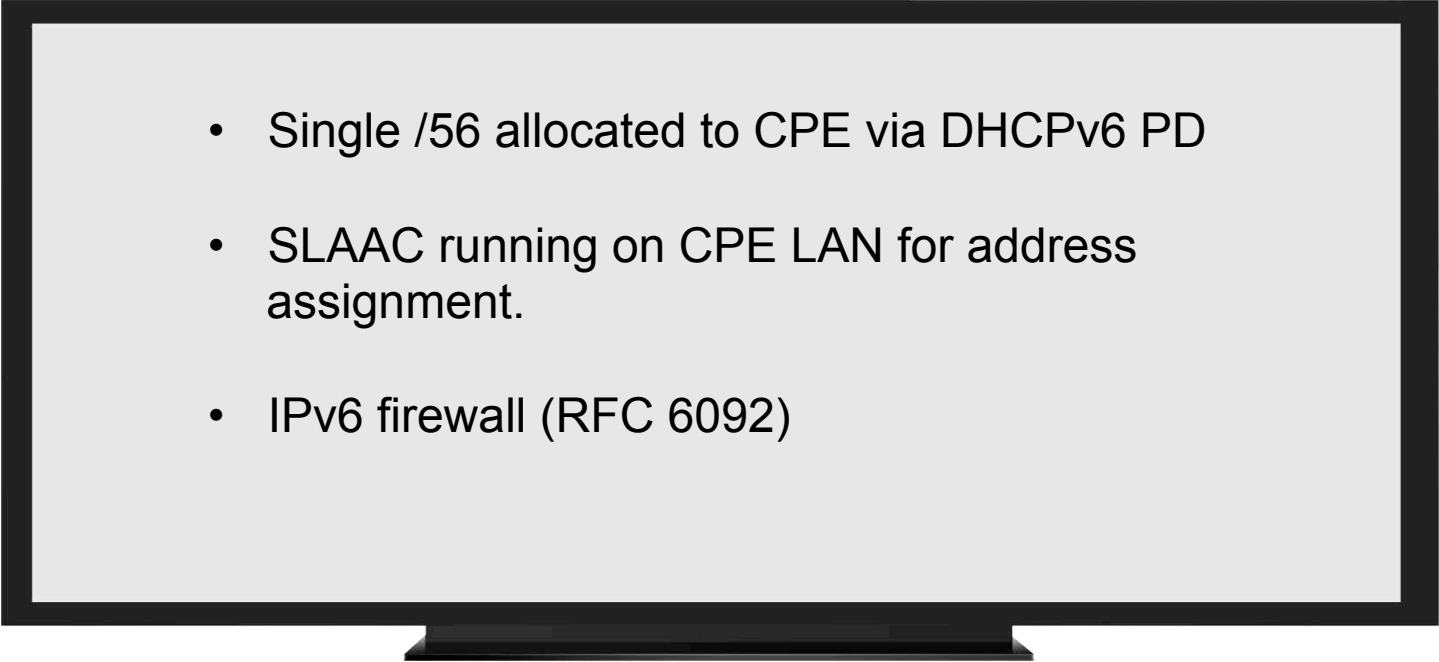
- 
- Enabling Dual-Stack IPv6/IPv4 for CPE/BNG
 - Enabling our P&T Edge
 - Enabling our on-net CDN



Why are we doing this?

- 
- IPv4 address exhaustion
 - Get as much traffic onto v6 as possible
 - We want to ensure the best possible User Experience

Some details on the configuration we are trialing

- 
- Single /56 allocated to CPE via DHCPv6 PD
 - SLAAC running on CPE LAN for address assignment.
 - IPv6 firewall (RFC 6092)

What have we achieved so far?



National IPv6 staff trial



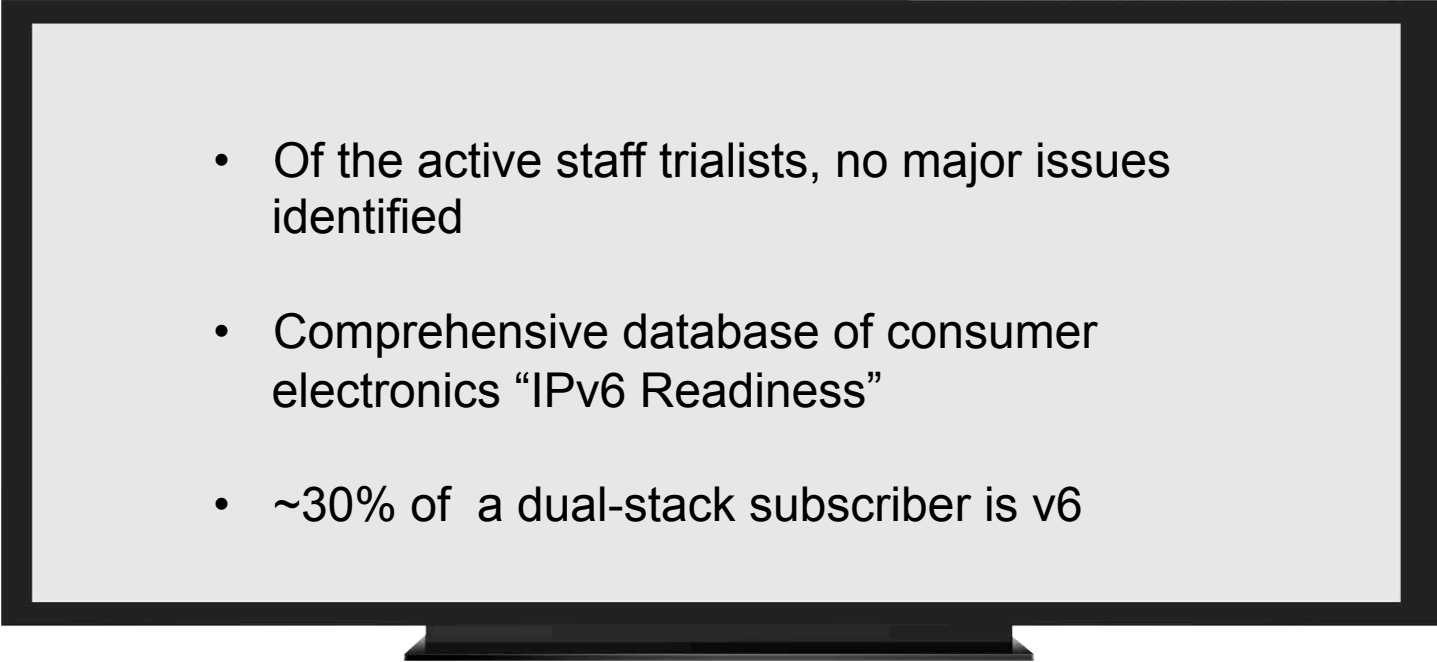
~Actively updating CPE's to be "v6 ready"



Major internet properties
now accessible via native
IPv6



What have we learnt?

- 
- Of the active staff trialists, no major issues identified
 - Comprehensive database of consumer electronics “IPv6 Readiness”
 - ~30% of a dual-stack subscriber is v6

What's next?

- Continue to expand staff trial to test E2E product
- Continue to prepare front-line support staff
- Aiming for customer trial first half of 2015



Questions?