

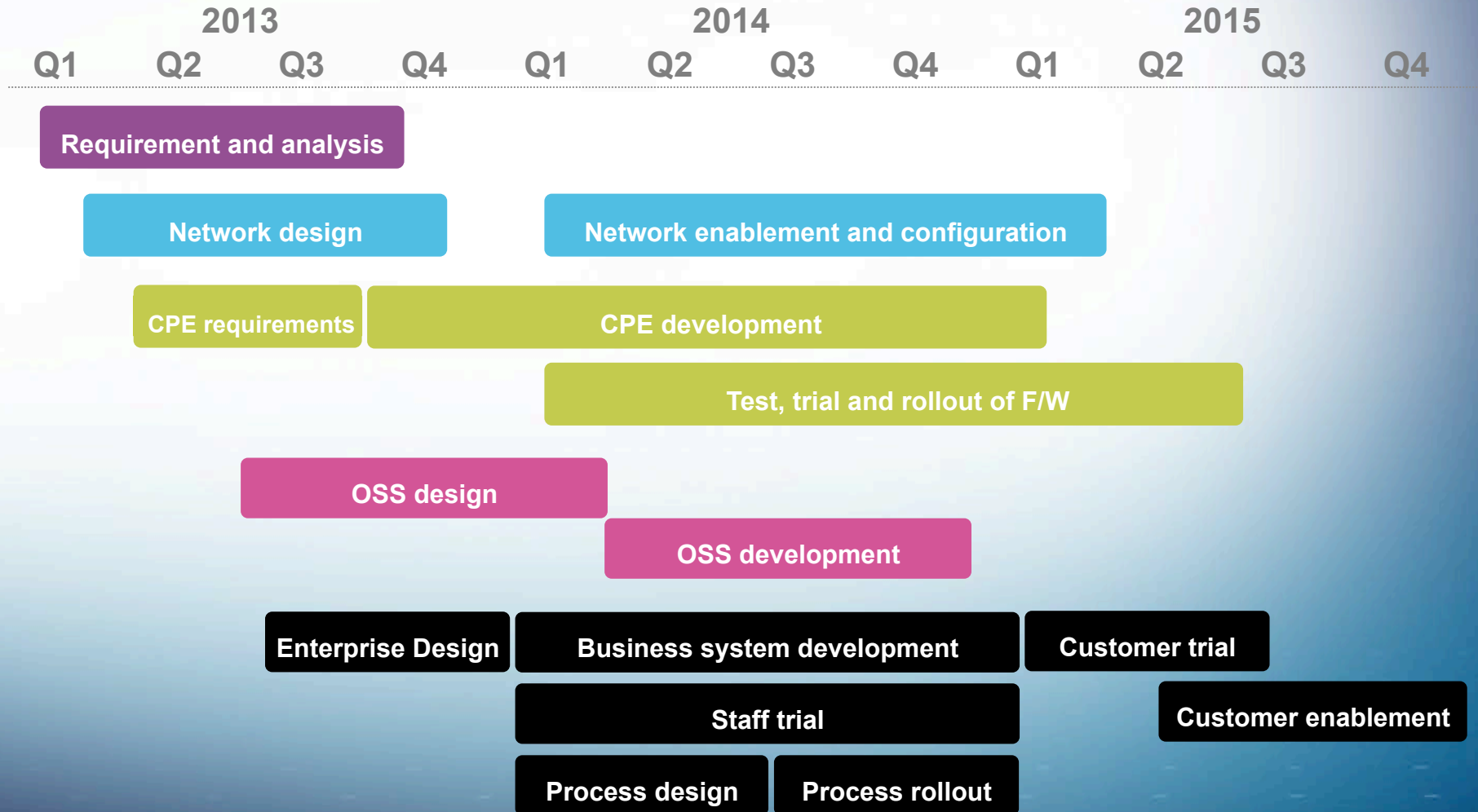


Sky IPv6 Update

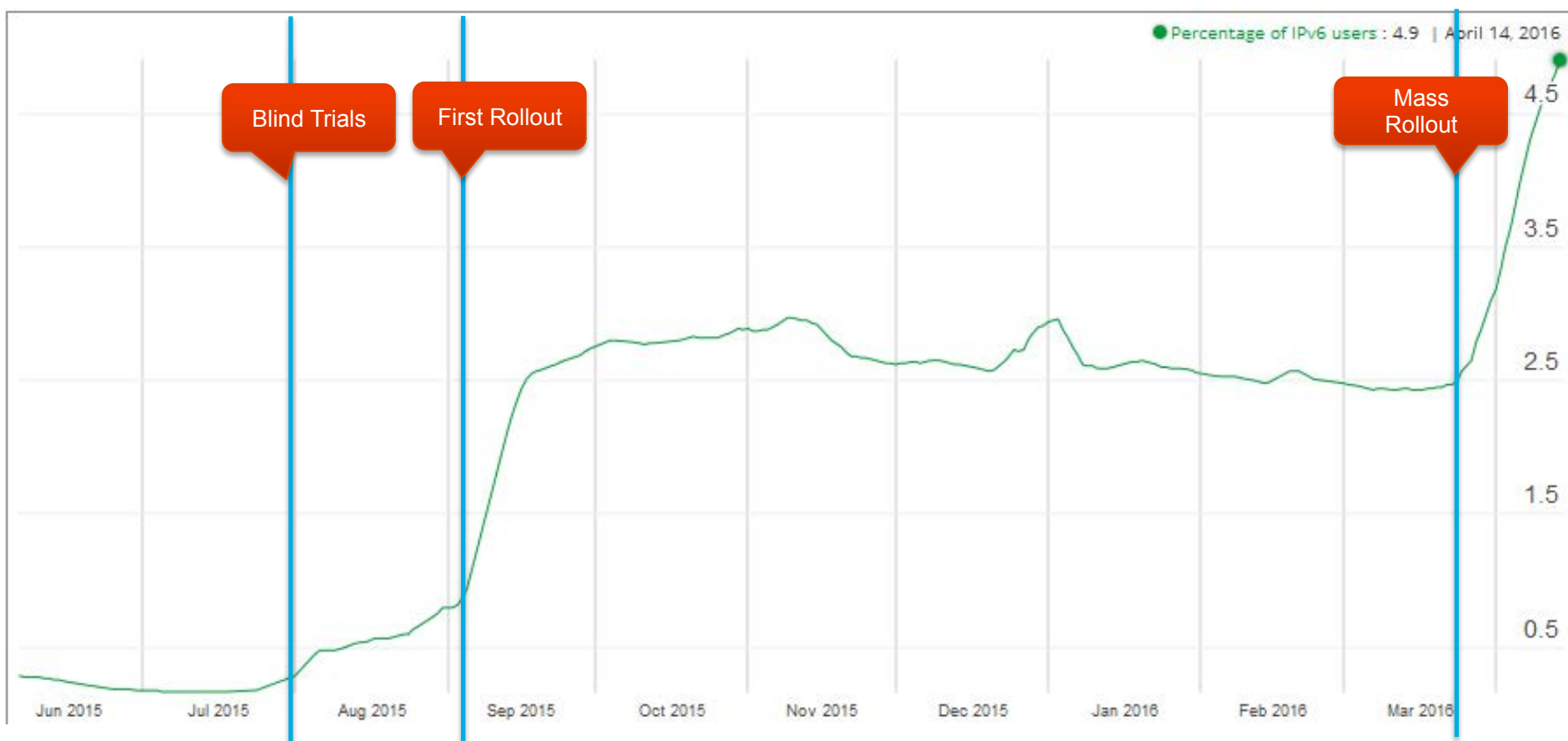
Ian Dickinson

ian.dickinson@sky.uk

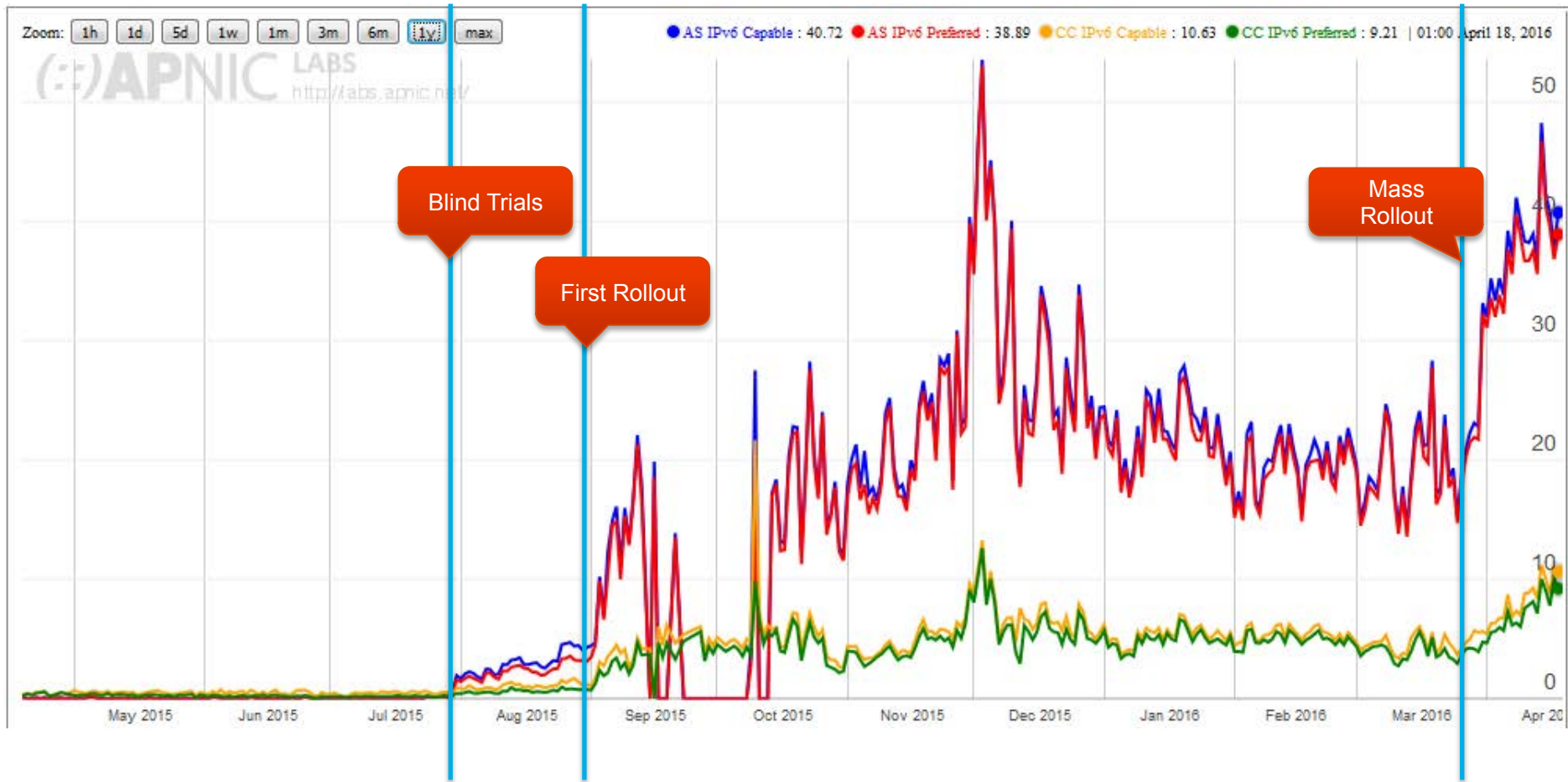
One of our longer rollout projects



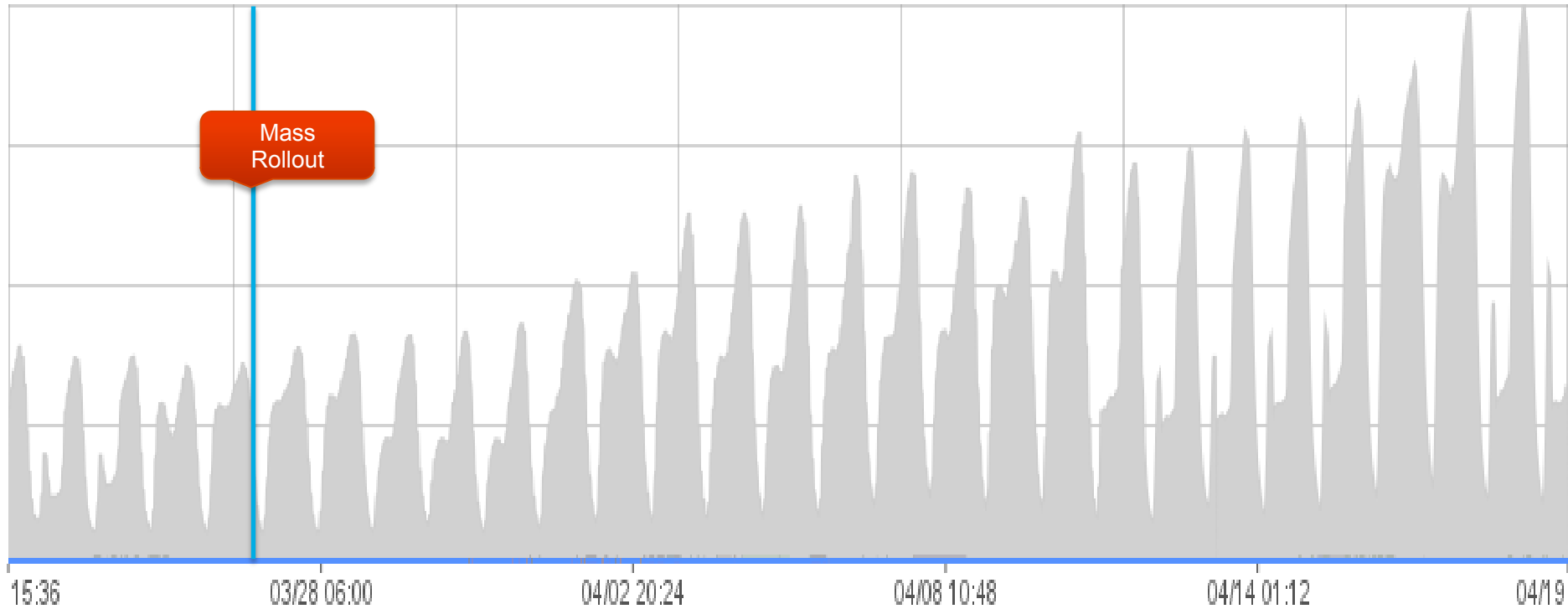
UK IPv6 User Count (from 6lab.cisco.com)



Sky IPv6 User Count (from APNIC)



Sky IPv6 Bandwidth

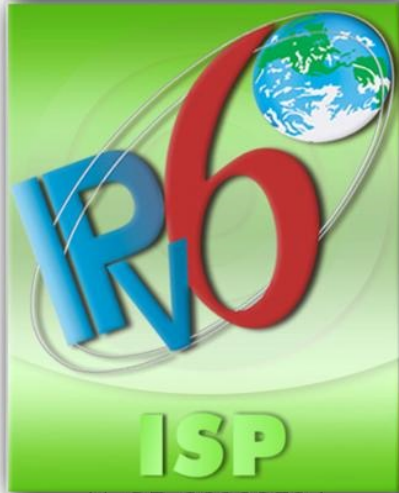


Top IPv6 ASNs by estimated population (from APNIC)

| Rank | ASN | AS Name | CC | Users (est.) | Value | % of country | % of Internet | V6 Users ▼ | % of AS | % of country | %of internet |
|------|---------|---|--------------------|--------------|---------------|--------------|---------------|------------|---------|--------------|--------------|
| 6 | AS7922 | COMCAST-7922 - Comcast Cable Communications, Inc. | US | 41963905 | 2261266984830 | 14.94 | 1.2713 | 26213472 | 62.47 | 38.76 | 15.02 |
| 16 | AS7018 | ATT-INTERNET4 - ATT Services, Inc. | US | 24018443 | 1294257819498 | 8.55 | 0.7276 | 19519251 | 81.27 | 28.86 | 11.19 |
| 24 | AS2516 | KDDI KDDI CORPORATION | JP | 19478043 | 708981287157 | 17.01 | 0.5901 | 8397570 | 43.11 | 44.73 | 4.81 |
| 13 | AS28573 | CLARO S.A. | BR | 31086406 | 349038166568 | 27.45 | 0.9417 | 8109730 | 26.09 | 56.54 | 4.65 |
| 90 | AS22394 | CELLCO - Celco Partnership DBA Verizon Wireless | US | 6590180 | 355118439480 | 2.35 | 0.1996 | 5897143 | 89.48 | 8.72 | 3.38 |
| 18 | AS17676 | GIGAINFRA Softbank BB Corp. | JP | 22435319 | 816623176281 | 19.59 | 0.6797 | 5368287 | 23.93 | 28.59 | 3.08 |
| 52 | AS3320 | DTAG Deutsche Telekom AG | DE | 10099803 | 484214855229 | 14.52 | 0.306 | 5219529 | 51.68 | 35.29 | 2.99 |
| 43 | AS5607 | BSKYB-BROADBAND-AS Sky UK Limited | GB | 12928451 | 594799245157 | 22.16 | 0.3917 | 5030046 | 38.91 | 74.93 | 2.88 |
| 26 | AS18881 | Global Village Telecom | BR | 19433211 | 218196093108 | 17.16 | 0.5887 | 4702434 | 24.2 | 32.78 | 2.7 |
| 5 | AS6830 | LGI-UPC Liberty Global Operations B.V. | AT | 43330191 | 2211399627876 | 628.01 | 1.3127 | 3866528 | 8.92 | 97.5 | 2.22 |
| 42 | AS12322 | PROXAD Free SAS | FR | 13292206 | 582424590302 | 24.71 | 0.4027 | 3598652 | 27.07 | 42.3 | 2.06 |
| 27 | AS3215 | AS3215 Orange S.A. | FR | 19271046 | 844399422582 | 35.83 | 0.5838 | 3530120 | 18.32 | 41.49 | 2.02 |
| 126 | AS852 | ASN852 - TELUS Communications Inc. | CA | 4639338 | 229076592426 | 13.55 | 0.1405 | 3173594 | 68.41 | 91.75 | 1.82 |
| 31 | AS4788 | TMNET-AS-AP TM Net, Internet Service Provider | MY | 16216931 | 179197087550 | 78.52 | 0.4913 | 2880976 | 17.77 | 99.37 | 1.65 |
| 111 | AS14420 | CORPORACION NACIONAL DE TELECOMUNICACIONES - CNT EP | EC | 5427084 | 33604504128 | 43.03 | 0.1644 | 2858104 | 52.66 | 99.94 | 1.64 |
| 156 | AS31334 | KABELDEUTSCHLAND-AS Vodafone Kabel Deutschland GmbH | DE | 3843041 | 184246914663 | 5.53 | 0.1164 | 2775220 | 72.21 | 18.76 | 1.59 |
| 163 | AS6848 | TELENET-AS Telenet N.V. | BE | 3697194 | 173220933288 | 39.65 | 0.112 | 2526053 | 68.32 | 53.61 | 1.45 |
| 51 | AS6147 | Telefonica del Peru S.A.A. | PE | 10475898 | 67098126690 | 79.43 | 0.3174 | 2357346 | 22.5 | 99.8 | 1.35 |
| 115 | AS20001 | ROADRUNNER-WEST - Time Warner Cable Internet LLC | US | 5156329 | 277853944494 | 1.84 | 0.1562 | 2212391 | 42.91 | 3.27 | 1.27 |
| 129 | AS21928 | T-MOBILE-AS21928 - T-Mobile USA, Inc. | US | 4525168 | 243843202848 | 1.61 | 0.1371 | 2142421 | 47.34 | 3.17 | 1.23 |

<http://stats.labs.apnic.net/cgi-bin/v6pop?d=3>

Get a badge!



11-GB-00000504

from the IPv6
Forum...

...and be very visible
in the World IPv6
Launch
measurements



| Show <input type="text" value="100"/> entries | | Search: <input type="text" value="5607"/> | |
|---|--|---|-------------------|
| Rank ^ | Participating Network ⇅ | ASN(s) ⇅ | IPv6 deployment ⇅ |
| 27 | British Sky Broadcasting | 5607 | 10.90% |
| Showing 1 to 1 of 1 entries (filtered from 257 total entries) | | | |
| First Previous 1 Next Last | | | |

Q1 Deliverables

- ✓ Some tasks completed during Q1CY2016
 - Additional assurance features
 - Additional abuse features
 - Additional recursive DNS capacity
 - Final CPE firmware rollouts

Q2 Enablement

- ✓ Default-On for new customer provides
- ✓ Bulk enablement for existing customers

Expected Outcome

- 92% IPv6 target for H1CY2016
 - Will improve with time, but will exceed 5m subscribers
 - More than 1.5Tbps IPv6 traffic delivered to subscribers
- 3% CPE too old
 - Normal hardware replacement and churn will fix this
- 3% technology problems
 - Old platforms will be retired
- 2% on non-Sky CPE
 - Not officially supported, though some proven to work



Questions?